

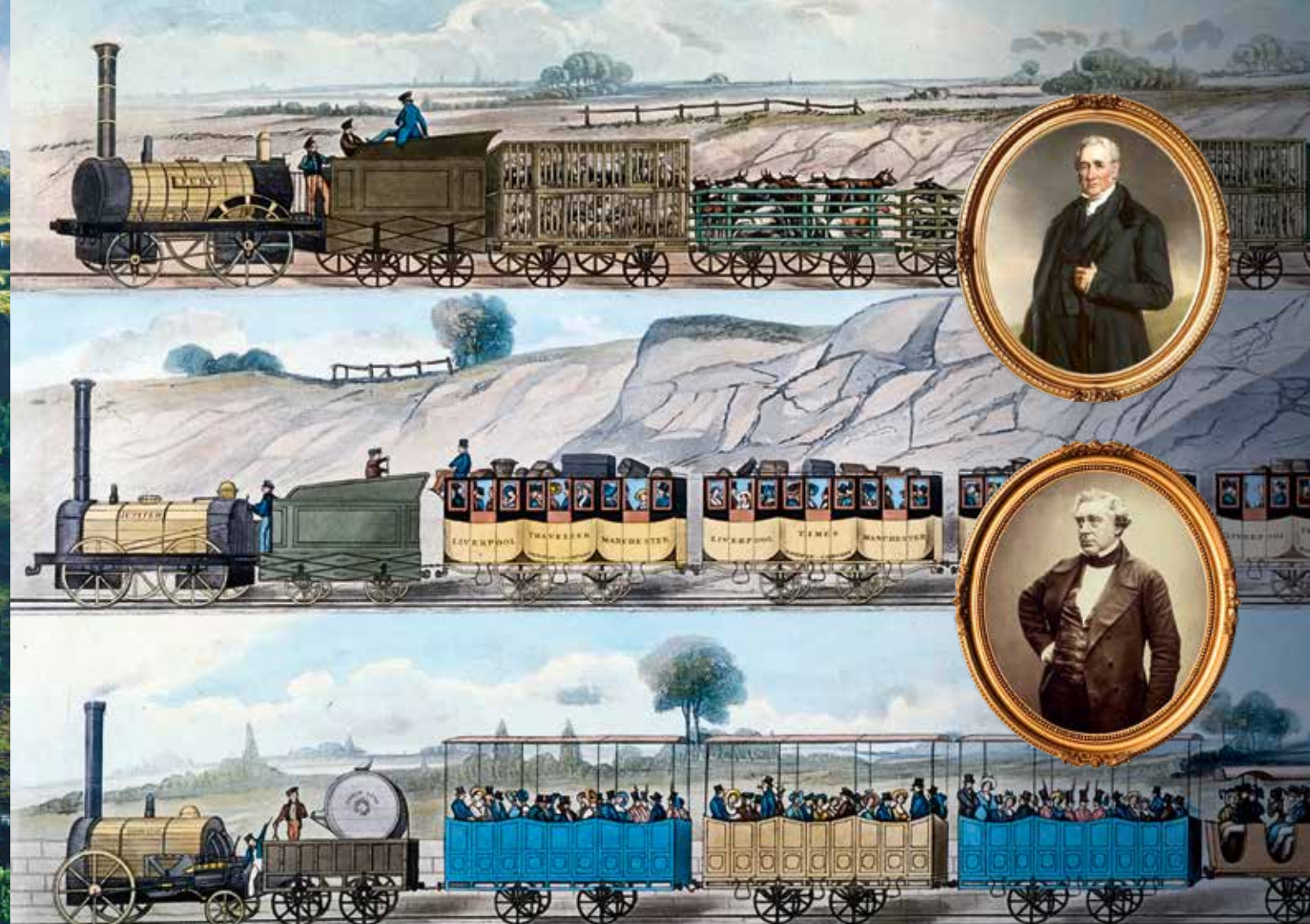
Clockwise from below: the Jacobite Steam Train crossing the Glenfinnan Viaduct railway in Inverness-shire, Scotland; an 1833 engraving by SG Hughes shows trains on the Liverpool & Manchester Railway hauling goods wagons (top); first-class carriages and a mail coach (middle); and open-topped second-class carriages (bottom). George Stephenson (1781-1848) was a celebrated railway engineer renowned as the "Father of Railways"; his son Robert Stephenson (1803-1859) was a civil engineer and designer of locomotives.

EXERCISES IN
Work It Out!

ALL ABOARD!

Railway 200

Hace doscientos años, la primera locomotora a vapor atravesó el condado de Durham, en el noreste de Inglaterra, cargada con once vagones de carbón y veinte de pasajeros. Un acontecimiento que marcó el nacimiento del ferrocarril y cambió el mundo para siempre.



On 27 September 1825, a steam-powered¹ locomotive set off² on a twenty-six mile [41.8km] journey through County Durham, a major coal-producing³ region in the north-east of England. The inauguration of the Stockton and Darlington Railway (S&DR) was a history-making event: for the first time, a steam-powered public railway could carry products (coal) and passengers, connecting collieries⁴ around Shildon with the market towns of Stockton and Darlington. Steam marked the advent⁵ of the modern railway network which spread rapidly across the country, transforming Britain's landscape, economy and society.

STRANGE STRUCTURES

To celebrate the bicentennial of this important event, a year-long programme called Railway 200 is taking place across the UK. Railway 200 began on 1 January 2025

with an experience known as a 'whistle off', when historic locomotives across the country all sounded their whistles⁶ at the same time. It continues with a broad programme of activities that reflect on the railway's past, present and future. The innovation of steam connected Britain internally and, with steam-powered ships, to the rest of the world. Railway innovation in Britain, and railroads in the US, led to the rapid rise of the factory system and mass production, and the expansion of global commerce and trade⁷.

INSPIRATION

One of the highlights of Railway 200 is a touring exhibition train called *Inspiration*. *Inspiration* crisscrosses⁸ the British mainland⁹, stopping at main line¹⁰ and heritage¹¹ stations as well as rail freight¹² depots¹³. It has four carriages¹⁴, each with its own interactive exhibition, created not only to celebrate this year's an-



SCAN, READ
& LISTEN

11

UPPER INTERMEDIATE **B2**

GLOSSARY

- 1 **steam-powered:** a vapor
- 2 **to set off:** partir
- 3 **coal-producing:** productora de carbón
- 4 **collieries:** minas de carbón
- 5 **advent:** llegada
- 6 **whistles:** silbatos
- 7 **trade:** negocios
- 8 **to crisscross:** cruzar
- 9 **mainland:** tierra firme
- 10 **main line stations:** estaciones principales
- 11 **heritage:** históricas
- 12 **rail freight:** trenes de mercancías
- 13 **depots:** terminales
- 14 **carriages:** vagones

GLOSSARY

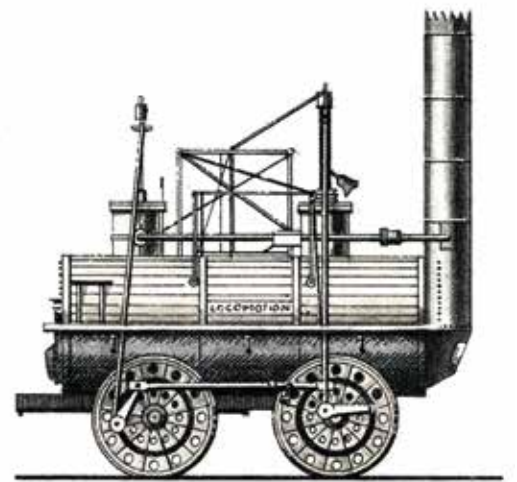
- 15 to pay homage:** rendir homenaje
16 humble: humilde
17 re-enactment: recreación
18 trail: pista, senda
19 to run along: seguir el recorrido

Right: an engraving of *Locomotion No. 1*, the first steam locomotive to haul a passenger-carrying train on a public railway; the Railway 200 logo.

niversary but to inspire young people to consider a career with the national railways.

LOCOMOTION

As part of Railway 200, a nine-month international arts and community festival, called S&DR200, pays homage¹⁵ to historic and humble¹⁶ County Durham and to the pioneering railway line that operated there from 1825 to 1863. Held from March to November 2025, the festival includes a three-day re-enactment¹⁷ of the debut journey of *Locomotion No. 1*, which was built by celebrated railway engineers George and Robert Stephenson. Along with special exhibitions and other outdoor events, the festival also inaugurates a twenty-six-mile walking and cycling trail¹⁸ that runs along¹⁹ much of the historical railway's route. ☺



INTERVIEW

WHISTLE OFF!

The commercialisation of steam-powered¹ transportation set the world in motion². While steamships³ transformed maritime trade and made long-distance travel more reliable⁴ and accessible, steam locomotives enabled⁵ faster and more efficient movement of goods⁶ and people. This year marks the bicentenary of the first steam-powered public railway that made its carbon-fuelled⁷ debut in the north-east of England in 1825. The event is celebrated across Britain with a year-long programme of activities and exhibitions called Railway 200. To find out more, *Speak Up* contacted Alan Hyde, Railway 200's head of marketing and communications. We began by asking him why it is such an important anniversary to commemorate.



Alan Hyde (English accent): It's a once-in-a-generation opportunity to celebrate an industry, a sector, that has

changed the world forever. And I think it's not too exaggerated to say that certainly the role of the railways in the Industrial Revolution is very much akin to⁸ the invention of the internet in the digital age, both of which have been hugely transformative, have connected people and communities in all sorts of ways. Obviously the railway is born in Britain, rolled out⁹ across the globe. It's created countries, you think of the US and India and other countries that perhaps wouldn't be the countries they are today without the advent of the railways. And it's still a force for positive change today as it's become more digitally-driven¹⁰. So I think it's important that it's not a sort of a rose-tinted¹¹ retrospective on the past, it's very much trying to show that the railways' pioneering pedigree is alive and kicking¹² today and is shaping the brave new

world¹³, particularly here in the UK, where the industry is going through structural change to become simpler, better and greener.

CHAIN OF INNOVATIONS

As Hyde explains, one twenty-six mile railway line in the north-east of England formed part of a chain of innovations that was to transform first Britain and then the world.

Alan Hyde: The date that is being marked, I ought¹⁴ to say, is the 27th of September 1825, in the north-east of England. But there were other key milestones¹⁵ before that that are recognized. So it's quite difficult to say when the railways was [were] born, because obviously the horse and cart on tracks¹⁶ carried coal¹⁷ and other cargo before 1825, but it's widely regarded¹⁸ as the birth of the modern railway, and it's transformed the way we live. Most people in the UK don't probably realise the products and services they enjoy every day, much of that is brought to them by rail freight¹⁹. So we're trying to convey²⁰ that story, from wine to toilet



Blaenavon's Heritage Railway near the Brecon Beacons National Park in Wales.



SCAN, READ & LISTEN

12

ADVANCED C1

GLOSSARY

- 1 steam-powered:** a vapor
2 to set in motion: poner en marcha
3 steamships: barcos de vapor
4 reliable: fiable
5 to enable: posibilitar
6 goods: mercancías
7 carbon-fuelled: impulsado por carbón
8 akin to: similar a
9 to roll out: desplegar
10 digitally-driven: digitalizado
11 rose-tinted: de color de rosa
12 alive and kicking: vivo y coleando
13 brave new world: nuevo mundo mejor
14 ought: deber
15 milestones: hitos
16 cart on tracks: carreta sobre vías
17 coal: carbón
18 to regard: considerar
19 rail freight: trenes de mercancías
20 to convey: transmitir, expresar



The *Tornado*, a 21st-century built steam locomotive at Appleby station in Yorkshire.



GLOSSARY

- 21 to power:** suministrar energía
22 elsewhere: otros sitios
23 enterprise: iniciativa, emprendeduría
24 train set: maquetas de trenes
25 scenery: paisaje
26 remiss: negligente

paper to carrying biomass to power²¹ stations to help keep the nation's lights on. Railway towns like Doncaster, Swindon, Crewe and elsewhere²², York, which wouldn't be what they are today as big tourist centres and centres of commercial enterprise²³ without the railways. And also coastal resorts, because the railways created mass tourism, and you've got resorts around the UK, and indeed I'm sure around the world, like Bournemouth, Blackpool, where the factory would shut and people would then go en masse by train to coastal resorts and enjoy the sea-side. So, economically, it contributes a massive amount to local, regional and national economy.



Alan Hyde: There's also the heritage railway sector, which in the UK is very strong, many of which are charities, but they carry millions of people a year on some of the most spectacular scenery²⁵ across the UK. So culturally, the railways has [have] shaped our cultural landscape. It's inspired, down the ages, generations of artists, musicians, filmmakers. You only have recently to think of the Hogwarts Express with Harry Potter. And environmentally, many of the railways actually have become green corridors with particular sorts of flora and fauna along the track side, which in the days of steam, often the railways acted as pollinators, carrying pollen from one part of the country to another and creating new biodiversity.

COLLECTOR'S ITEMS

So, is there any event from Railway 200 that Hyde would particularly recommend?

Alan Hyde: It'd probably be remiss²⁶ of me to pick [one]! There's a brilliant event in Derby, which is the new home of the railway in the UK, by Alstom, one of the world's leading train manufacturers. And they're organising four days of

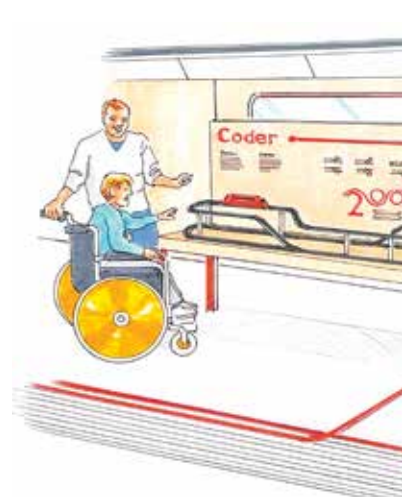
POPULAR CULTURE

British people young and old are renowned for their love of trains. Some lucky ones own quite sophisticated train sets²⁴, and railways feature prominently in books and in films, from *The Railway Children* to Harry Potter. As Hyde explains, trains are both culturally and environmentally significant.

Clockwise from top: *The Railway Station* an 1862 painting by William Powell Frith shows a crowded Paddington Station in London; the Royal Mint has launched a commemorative £2 coin to mark this year's 200th anniversary of the modern railway.

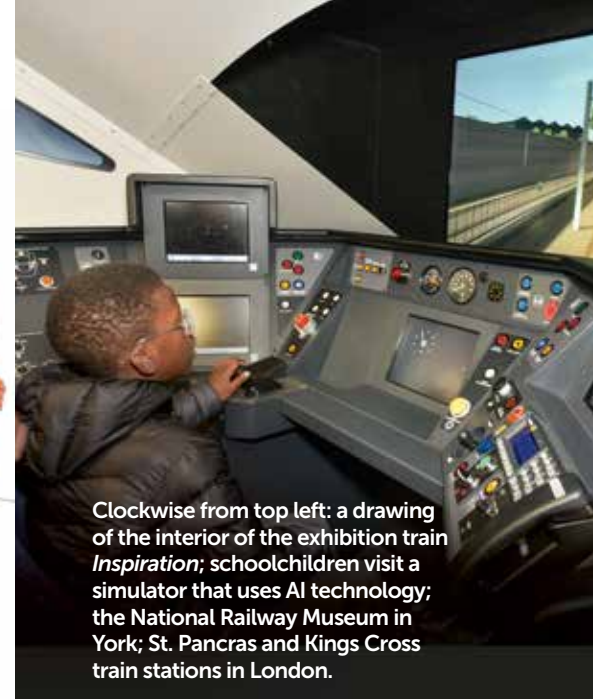


Clockwise from top left: a mysterious luggage trolley disappears into a wall heading to Platform 9 3/4 at King's Cross station (a reference to the Harry Potter books); in 1934 the *Flying Scotsman* (pictured recently, still in action) became the first steam locomotive to officially reach 100mph (160kph) in speed in passenger service; in 1938 the *Mallard* (now retired) set a new record of 126mph (202kph).



ABIT OF "INSPIRATION"

One of the highlights of Railway 200 is the exhibition train *Inspiration*, with an estimated 400,000 people set to visit. *Inspiration* travels across Britain wowing⁴⁶ bystanders⁴⁷ with its eye-catching⁴⁸ livery⁴⁹. For its lucky passengers, there are four carriages to visit, each dedicated to a particular free-of-charge exhibition: one is about railway technology and innovation; another is an interactive family-oriented environment; a third focuses on the diverse and sometimes surprising array of careers in the railway industry, from engineers to architects to guards and drivers; a fourth is used as a flexible exhibition space depending on where the train is travelling to next. On the train's travel itinerary are mainline stations across the nation as well as heritage railways connected to the rail network and freight depots along the way.



Clockwise from top left: a drawing of the interior of the exhibition train *Inspiration*; schoolchildren visit a simulator that uses AI technology; the National Railway Museum in York; St. Pancras and Kings Cross train stations in London.



GLOSSARY

- 27 array:** variedad
- 28 to knit:** tejer
- 29 jumper:** suéter
- 30 in and of itself:** en sí misma
- 31 to aim at:** tener como objetivo
- 32 to pledge:** comprometerse
- 33 to showcase:** exhibir
- 34 keen:** entusiasmados
- 35 to shine a spotlight:** poner el foco de atención
- 36 coders:** programadores
- 37 hence:** por tanto
- 38 intake:** entrada
- 39 to run riot:** desbocarse
- 40 undimmed:** intacta
- 41 fares:** tarifas
- 42 to run on time:** circular con puntualidad
- 43 whilst:** al mismo tiempo que
- 44 as it were:** por así decirlo
- 45 to shout long, loud and proud:** gritarlo a los cuatro vientos
- 46 to wow:** asombrar
- 47 bystanders:** transeúntes
- 48 eye-catching:** llamativo
- 49 livery:** colorido

fun-filled excitement with a vast array²⁷ [of exhibits]. They're calling it "the greatest collection of trains and rail exhibits and associated activity," and expecting lots of interest and lots of people to come along to that as well. But there's a long list. Nothing is too big or too small. We know of one lady who's going to be knitting²⁸ a jumper²⁹ with the Railway 200 logo. That in and of itself³⁰ is just a lovely contribution.

PEOPLE-CENTRED

Railway 200 is also aimed at³¹ interesting young people in working with the railway industry, which has pledged³² to become net zero by 2050. The railways offer a wide range of careers, as they touch on many aspects of British life, says Hyde: from heritage and tourism to engineering and environmental jobs. Most importantly, Railway 200 aims to show the pride, passion and professionalism of those who choose to work in the industry.

Alan Hyde: We're supplementing the industry's efforts to try and showcase³³ what a fantastic place the industry is to build a career for people of all backgrounds. Around the globe, we're all competing for the same talent one way or another, so we're very keen³⁴ to get the next generation of pioneering talent to consider a career in the railways.

We're shining a spotlight³⁵ on some of the more hidden roles in the railway. So it's not just the roles that most people see, like a train driver or a guard on the train or somebody on the platform, but it's the fact that there are ecologists, there are hydrologists, there are drone pilots, there are coders³⁶... there are all sorts of other roles. In the UK the railways employs [employ] about three hundred thousand people, so obviously a significant industry with lots of opportunity to build a rich and rewarding career. Hence³⁷, education skills being a key theme for us. So, obviously the challenge is to get a good intake³⁸ of younger people, as I say, from all backgrounds, to join the industry.

THE FUTURE OF RAILWAYS

European visitors may be shocked at the expense and inefficiency of British trains. This is because the railway system is so old, Hyde explains. It is difficult to update and hard to decarbonise. So what will the future of British railways be like?

Alan Hyde: Who knows? Imagination runs riot³⁹... We know it will be a much greener, simpler railway, certainly here in the UK, a better railway. I mean, the railway is very popular. It's obviously, like many parts of the economy around the globe, suffered through the

effects of Covid, when people weren't travelling. But its sort of innate attraction [is] undimmed⁴⁰. There'll be lots of competitions, lots of invitations to people and school groups to use their imagination and try and sort of design the train of the future and what a new railway station might look like while still respecting the past. 'Cause in the UK, there's some really good examples. You have to think of Saint Pancras, for example, which is wonderful, in London, and other stations, old Victorian stations that have been beautifully restored and modernised. So, who knows what two hundred years will look like? But certainly it's about making progress, making fares⁴¹ more simple and less complex to understand, making sure trains run on time⁴² more often and making the journey experience even more wonderful. It's a wonderful, wonderful industry. And I think, it is an opportunity whilst⁴³ taking the public on a journey, as it were⁴⁴, without being too clichéd, but sort of recognising the railway's not perfect, but it has a brilliant story to tell and it needs to shout about that long, loud and proud⁴⁵ to convey how it has shaped people's lives and created the UK that we all we all know today. ☺

www.railway200.co.uk



SPEAK UP Explains

Whistle off. En los trenes antiguos, el 'silbato' (*whistle*) era una herramienta esencial para la comunicación entre el maquinista y el resto de trabajadores del ferrocarril, además de servir como advertencia para las personas cercanas a las vías. Por otro lado, en inglés, la partícula *off* aparece en numerosas expresiones que denotan el inicio de algo, como el *kick off* ('chute' o 'saque inicial') de un partido de fútbol, o el *take off* o *blast off* para el 'despegue' de un avión o de un cohete, respectivamente. Siguiendo este uso, *whistle off* se emplea aquí para señalar el arranque del programa Railway 200 con el sonido característico de los silbatos de locomotoras antiguas, un detalle que aporta un toque ceremonial a la celebración.

Heritage railway sector. Sector de ferrocarriles históricos. Como cuna del ferrocarril, en el Reino Unido tanto las locomotoras y trenes como las estaciones históricas desempeñan un papel fundamental en la conservación del 'patrimonio' (*heritage*) cultural. Tienen, además, un impacto notable en el sector turístico, con más de quinientas locomotoras operativas, cerca de 800 kilómetros de vías restauradas, y más de 460 estaciones históricas que atraen a millones de visitantes cada año.